



Seeking School Community Feedback The Heritage Heart Project

Steps to date ...

BSPN Architecture have hosted a series of workshops with stakeholder groups, creating a forum for each group to openly voice their suggestions. The points raised at those forums have informed the first iteration of the "A" Block refurbishment design.

We would like to thank the students, staff, parents, old girls and all other contributors for their participation in the community engagement thus far.

Subsequently, BSPN Architecture have received further suggestions from the School on the detailed design of the external façade of "A" Block, with the aim being to retain the elements that contribute to its special character. These ideas have now been incorporated into the next iteration of the "A" Block façade. The updated façade and interior design elements are now provided for review.

From the beginning, the BSPN design team have understood the need for strong engagement and information sharing with both the School community and wider community.

Next steps ...

We are seeking your feedback on the design of the "A" Block façade, so that it best meets community expectation and needs.

Your participation ...

We invite you to lodge your feedback in person or via email.

In person feedback

- The "A" block design images will be on display in the Vestibule of Cumbooquepa from 9.00am–4.00pm Friday, 30 April and Tuesday 4 May.
- We regret there is no parking available on campus.
- Please sign in and out via the Principal's Office Reception.
- You can view the architect's images and lodge suggestions in the "Feedback" box.

Online feedback

- You can view the architect's images attached to this information.
- Feedback will be accepted from Friday, 30 April – Tuesday, 4 May
- Please lodge your feedback via email Masterplan@somerville.qld.edu.au

Timeline ...

- The opportunity to email ideas and feedback will close at **5.00pm Tuesday, 4 May**.
- Consolidated feedback will be provided to the architects and shared with the community via our Master Plan page.
- BSPN will progress with the more detailed design of "A" Block in May.
- It is anticipated that the refurbishment works will commence in November, 2021.

FROM THE OFFICE OF THE PRINCIPAL

Mrs Kim Kiepe MEd (Leadership & Management), BEd, DipT, MACEL, GAICD

17 Graham Street, South Brisbane Qld 4101 | PO Box 3357, South Brisbane Qld 4101
P +61 7 3248 9212 | F +61 7 3846 1450 | E principal@somerville.qld.edu.au | W somerville.qld.edu.au

A school of the Presbyterian and Methodist Schools Association. The PMSA is a mission of the Presbyterian and Uniting Churches.

CRICOS Provider Code: 00522G | ABN 98 191 145 037

Celebrated timber detailing

Reinstated timber weatherboard

Heritage Clock

Traditional style casement windows



Restored verandahs

Brick bands to reflect Cumbooquepa brickwork and provide planting and seating to the lawn edge



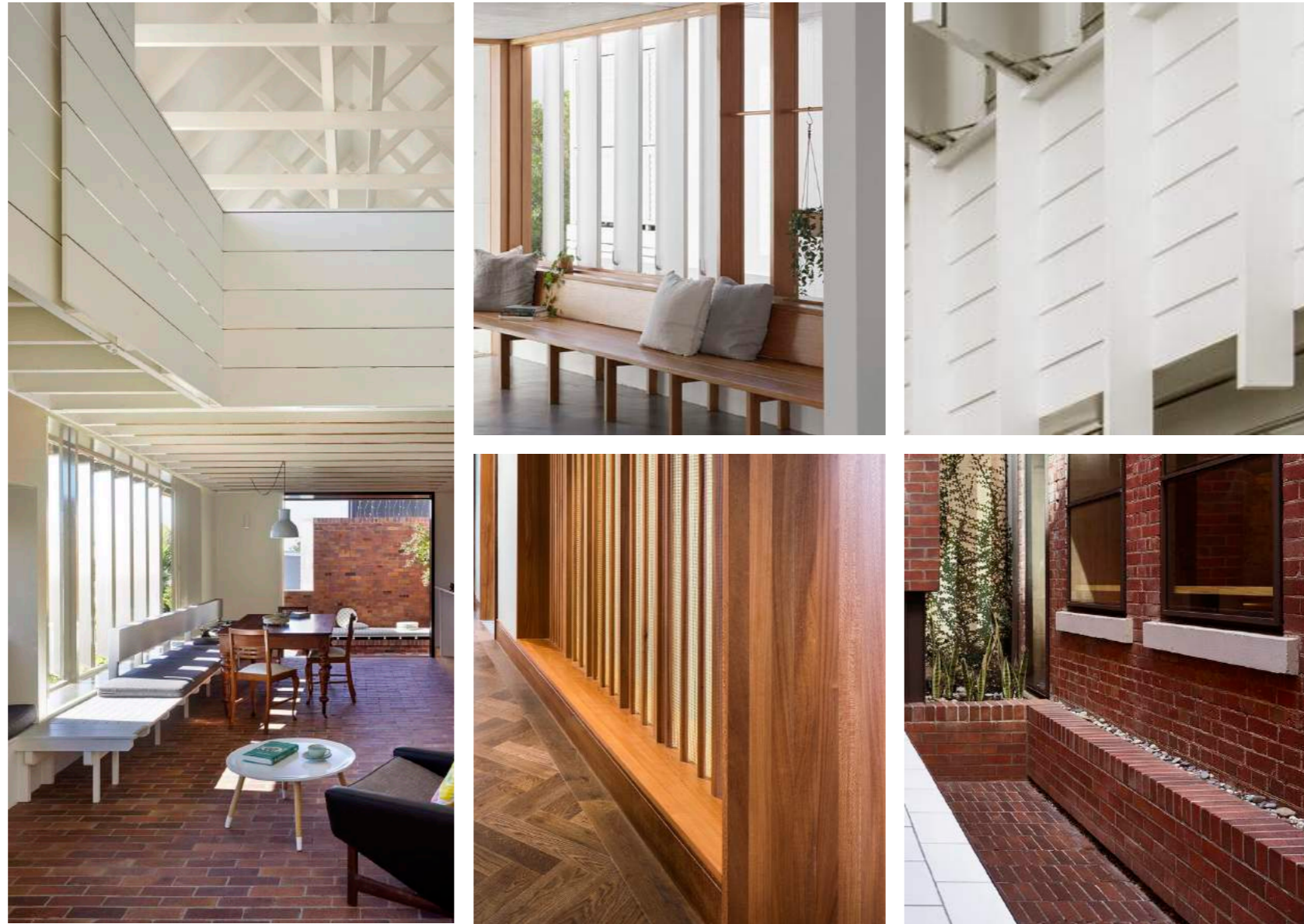
HERITAGE FACADE

"The Heritage Heart masterplan represents efficient and contemporary use of an early part of the school's architectural history."

OGA Feedback



HERITAGE FACADE



VERANDAHS | LOOK & FEEL



VERANDAHS

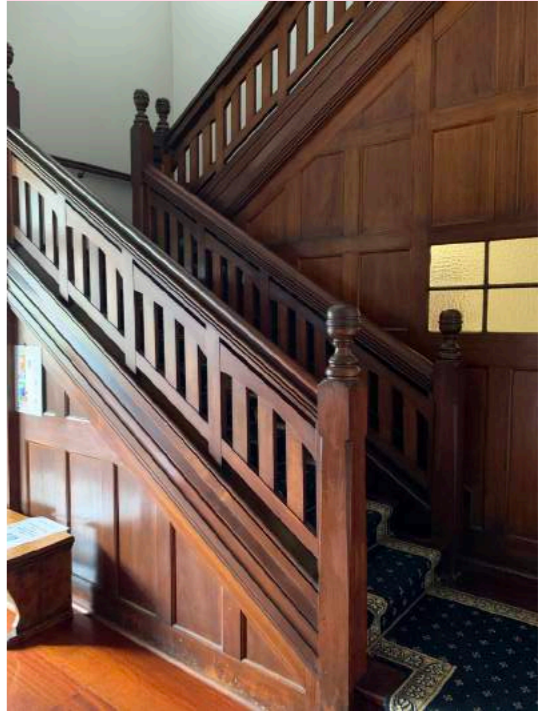


Glazed cabinet at entry with revolving memorabilia display.



Timber flooring to match heritage balustrade

*Old Girl Wall
Artwork/ portraits celebrating achievements of past students to extend full height of stairwell.*

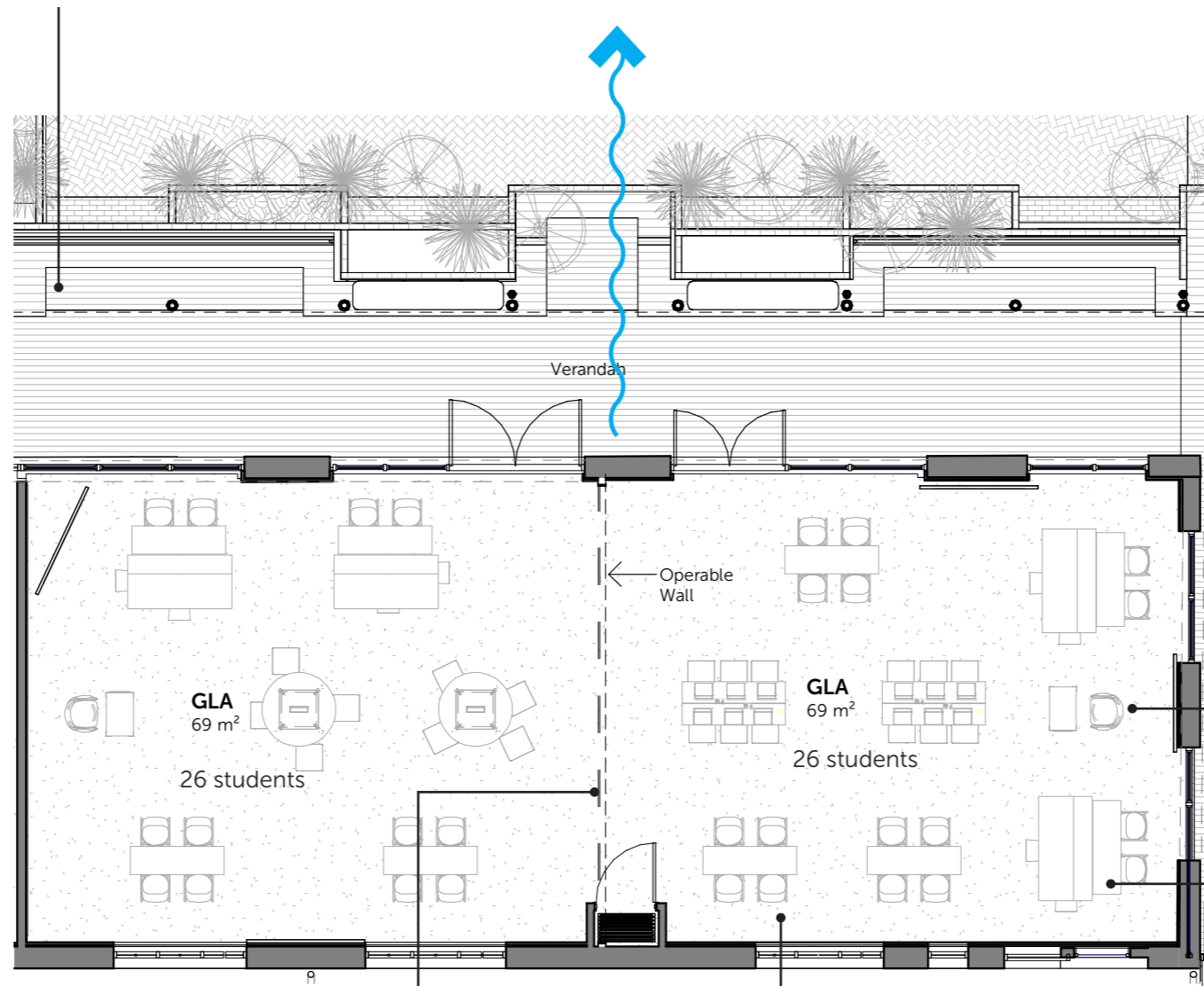


Restore timber staircase to its former grandeur, to formalize the space as the centrepiece of the building.

ENTRY STAIR



Verandah extensions to provide learning breakout spaces and informal seating nooks on the lawn



Teacher hubs allow multi-modal teaching

Varied furniture options for flexible learning



Operable walls with white boards for adaptable spaces

State of the art technology



GENERAL LEARNING AREAS | CLASSROOM ARRANGEMENT

*View to breakout spaces
& heritage lawn*

*Timber glazed louvres
for natural ventilation and light*

*Acoustic fins
with easy access to services above
for maximum adaptability*

*Seamless
operable walls*



*Views through to
Cumbooquepa*

*Heritage mouldings
reinstated*

*Varied furniture option
for flexible learning*

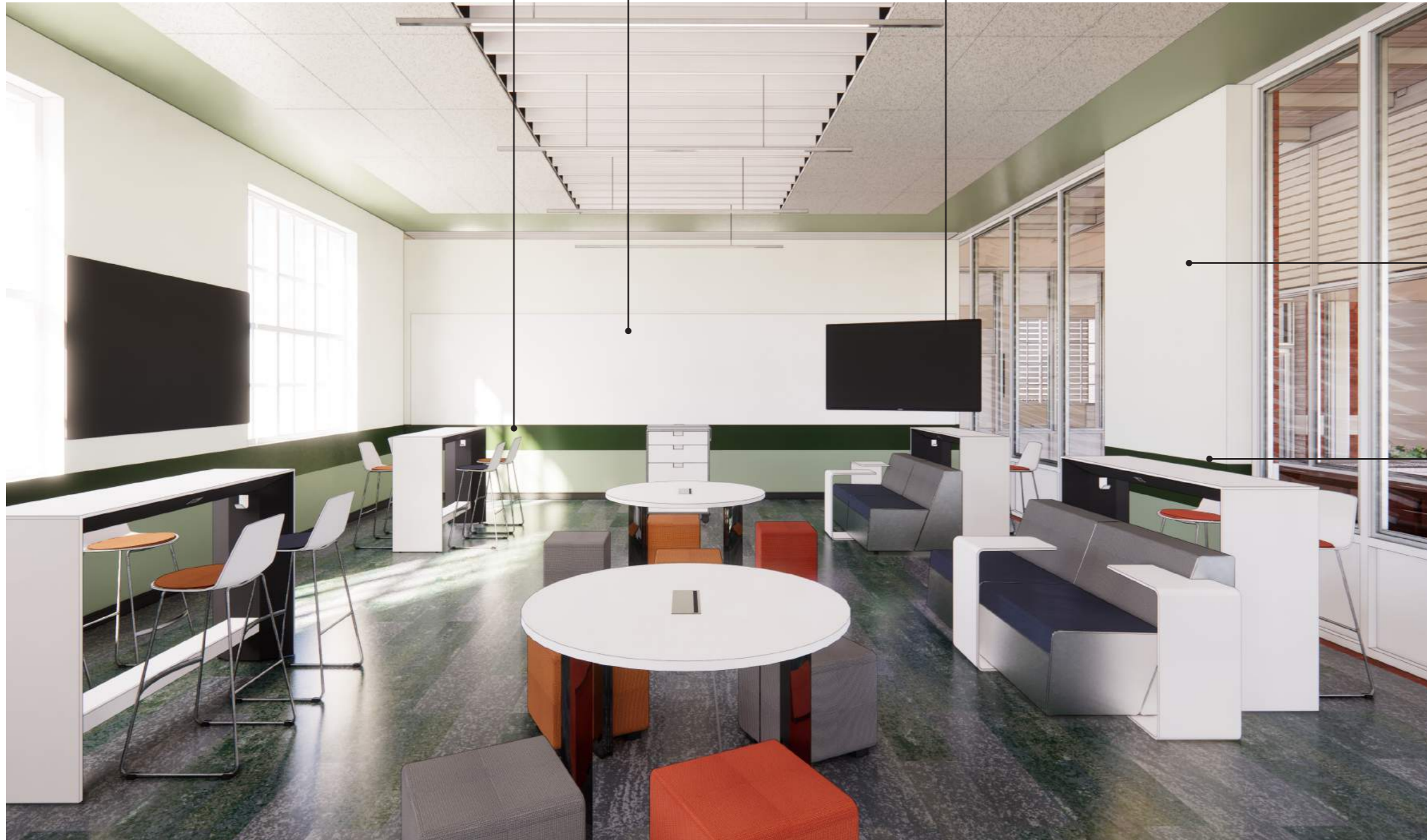
*Moveable teaching aid
for multi-modal teaching*

GENERAL LEARNING AREAS | LEVEL 5

Colour bands to reflect banding of brick and concrete lintel construction externally

Whiteboard walls

Manouverable screens &/ or COWS



Whiteboard/ pinboards on adjacent walls for multimodal teaching

Heritage mouldings reinstated

GENERAL LEARNING AREAS | LEVEL 5