



| 50°30'15"N |
A S O N E
| 004°58'40"W |

o Park

IGNITING CORNWALL'S
DIGITAL ECONOMY

2025 - 2030

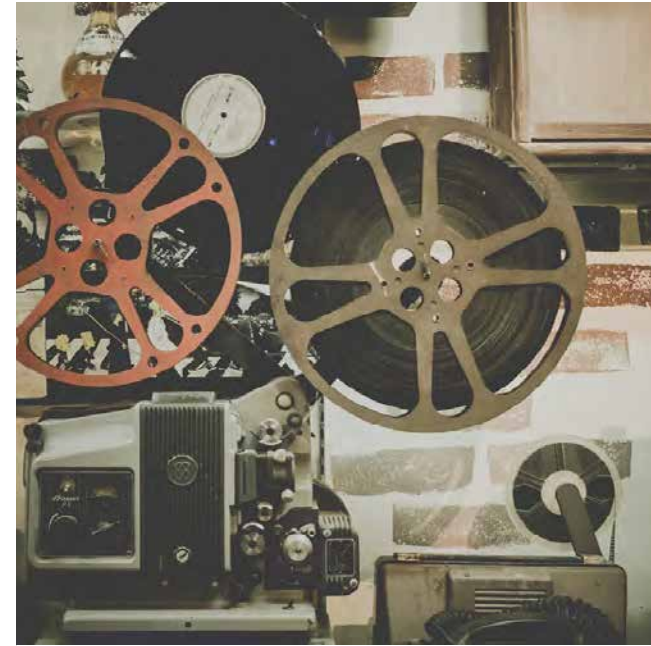
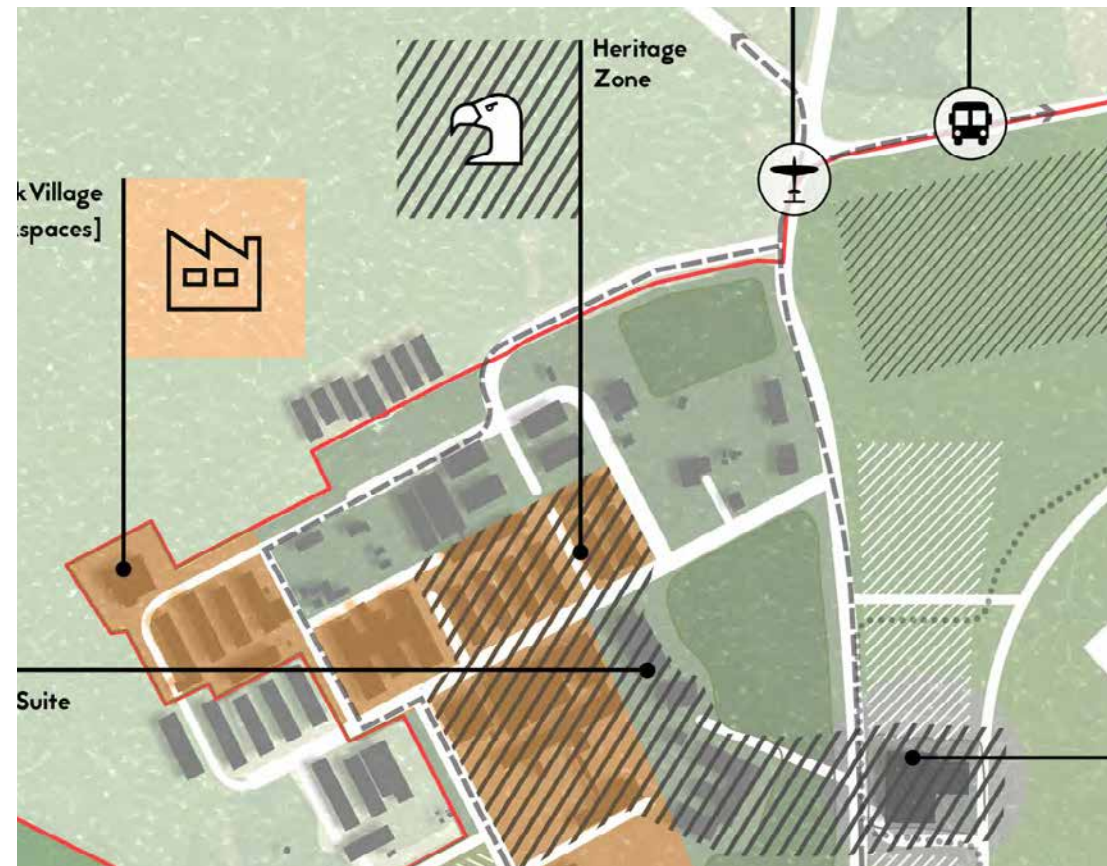


THE MASTERPLAN



VISION TO 2030 PHASE ONE

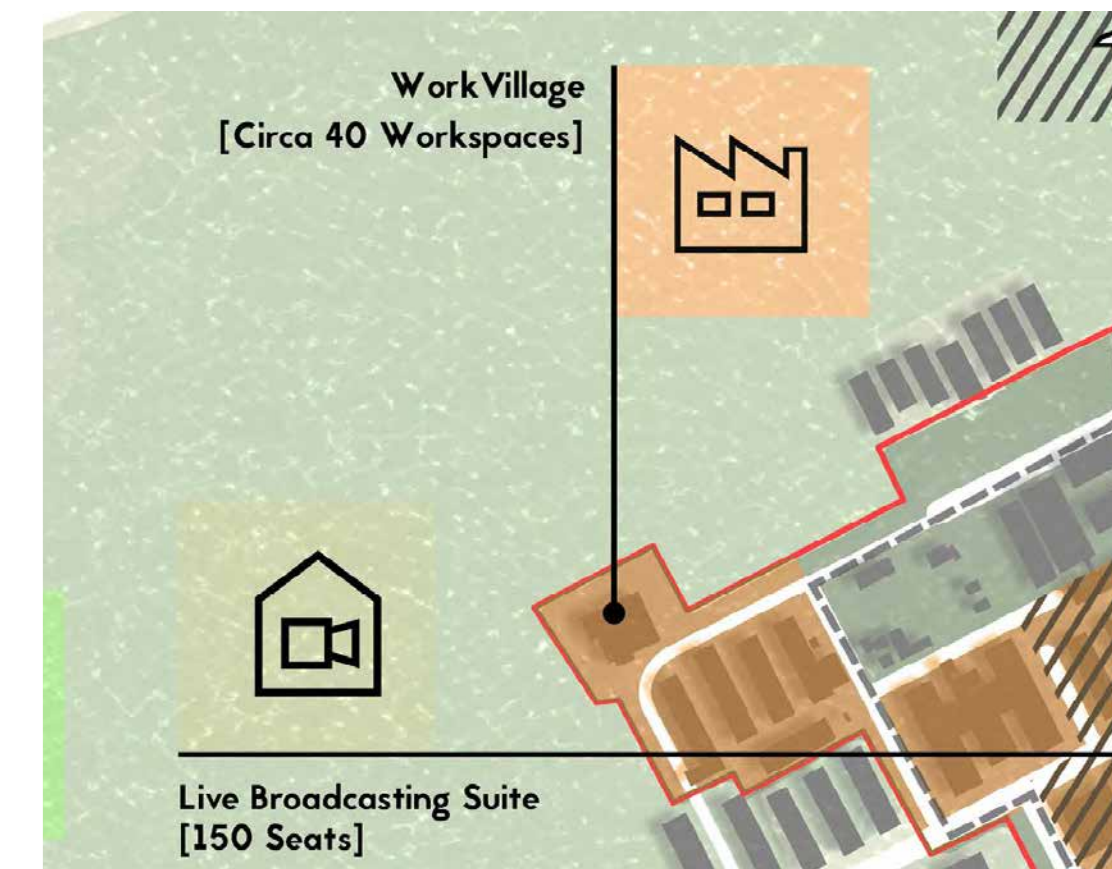
HERITAGE DISTRICT



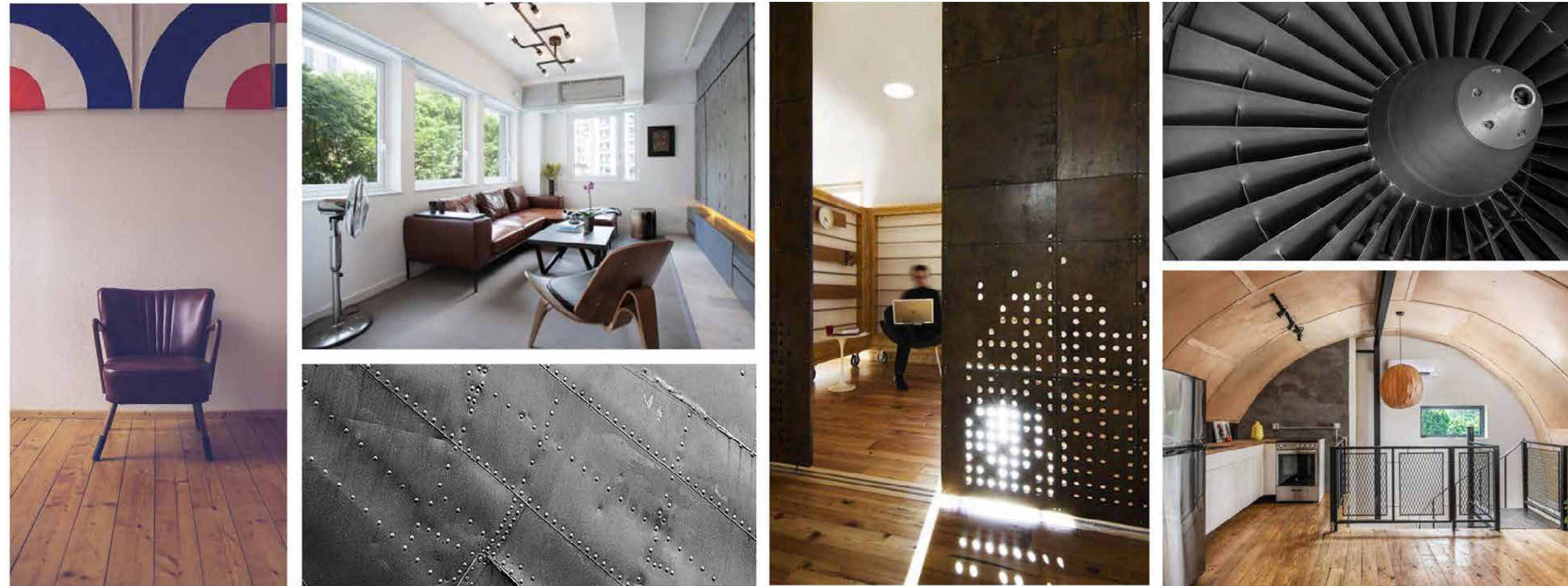
VISION TO 2030 PHASE ONE



OFFICES AND WORKSPACES

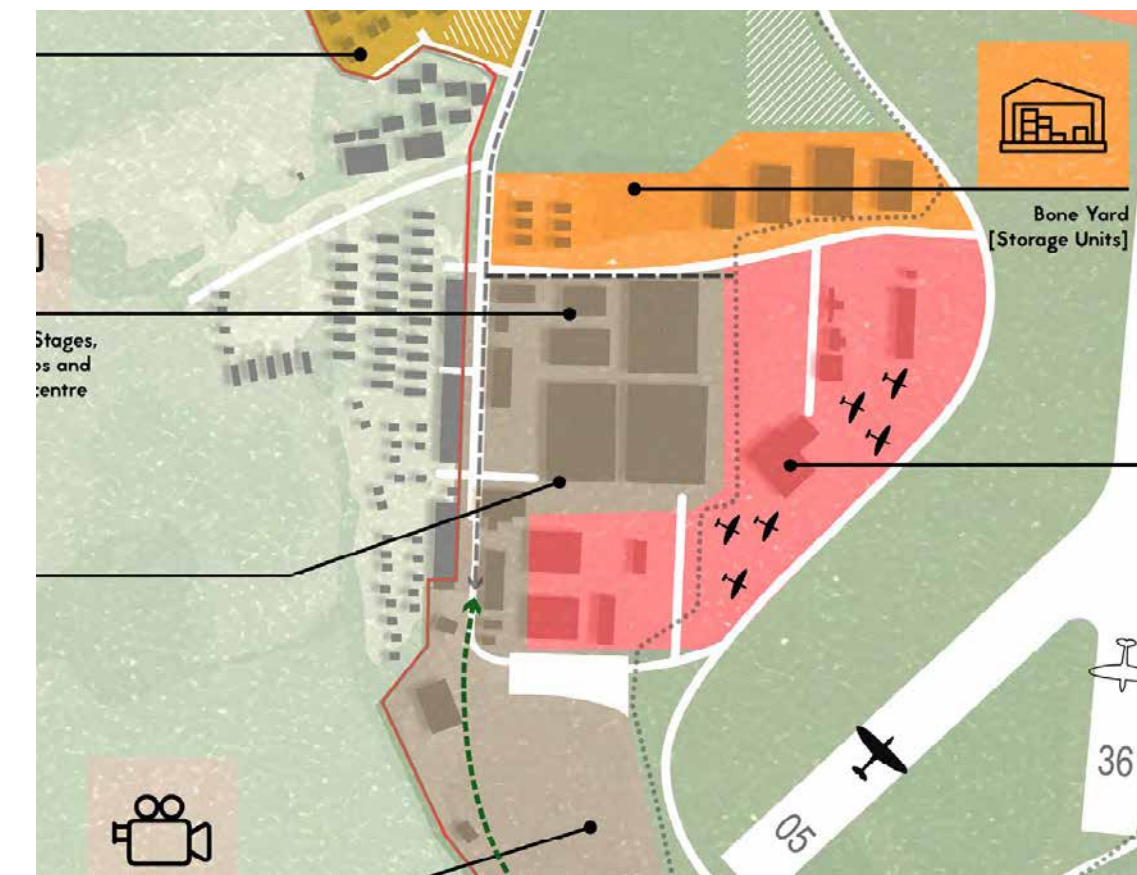
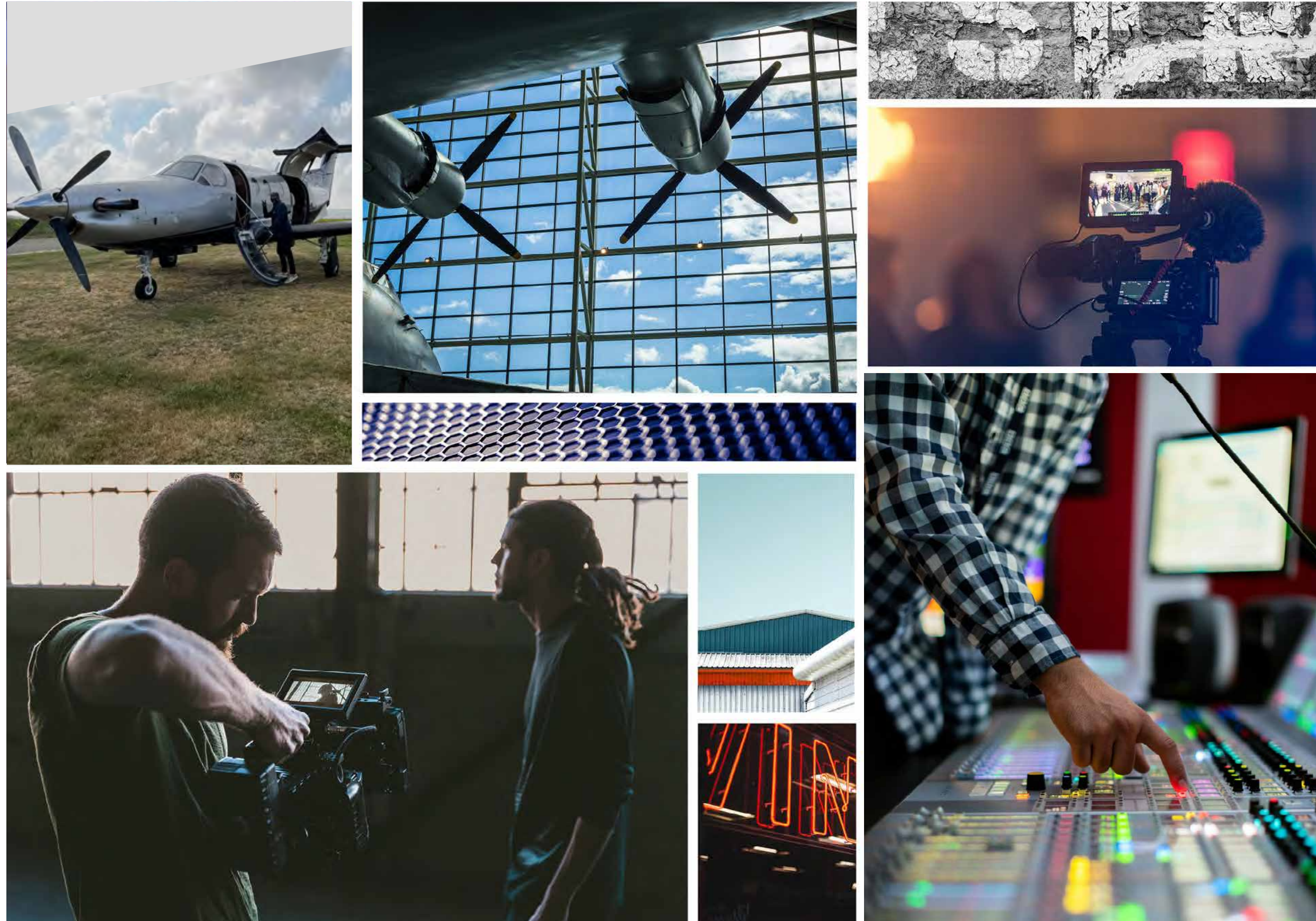


VISION TO 2030 PHASE ONE



SERVICED ACCOMMODATION VILLAGE

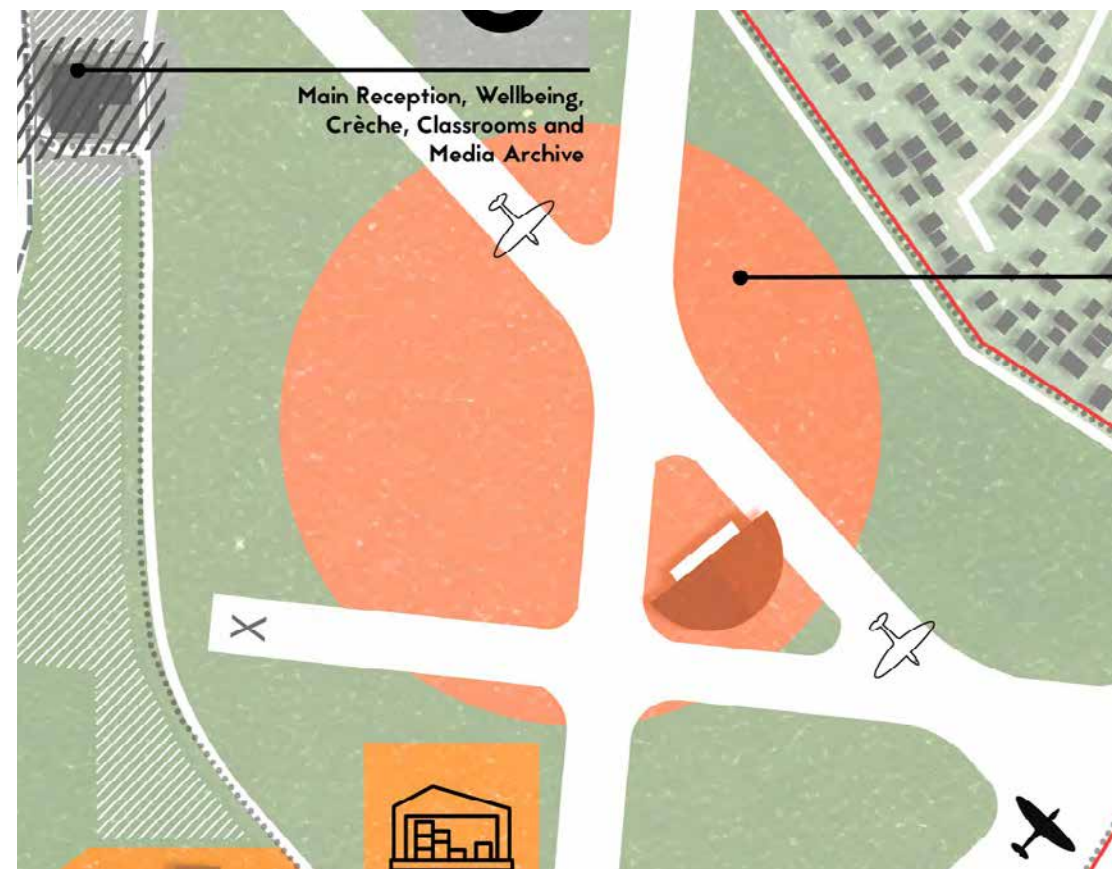
VISION TO 2030 PHASE TWO



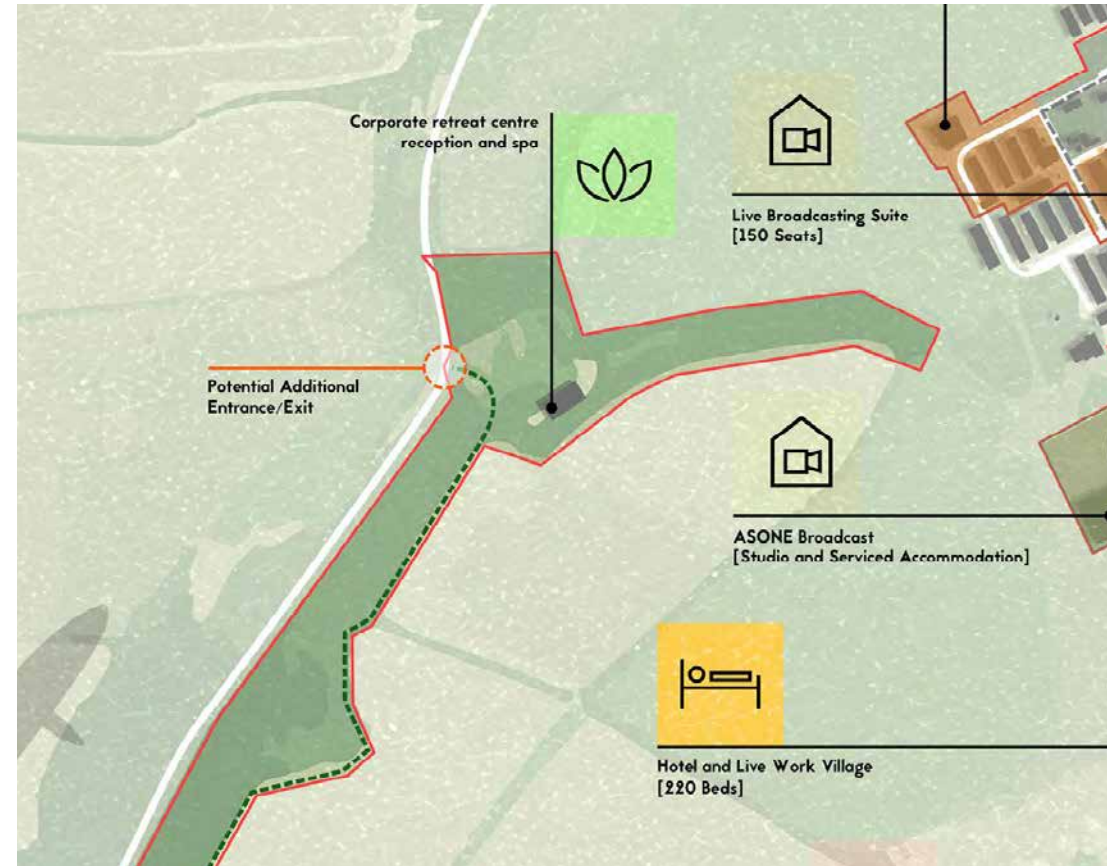
PERFORMANCE VILLAGE AND AVIATION HUB

VISION TO 2030 PHASE TWO

VENUES AND EVENT SPACE



VISION TO 2030 PHASE TWO

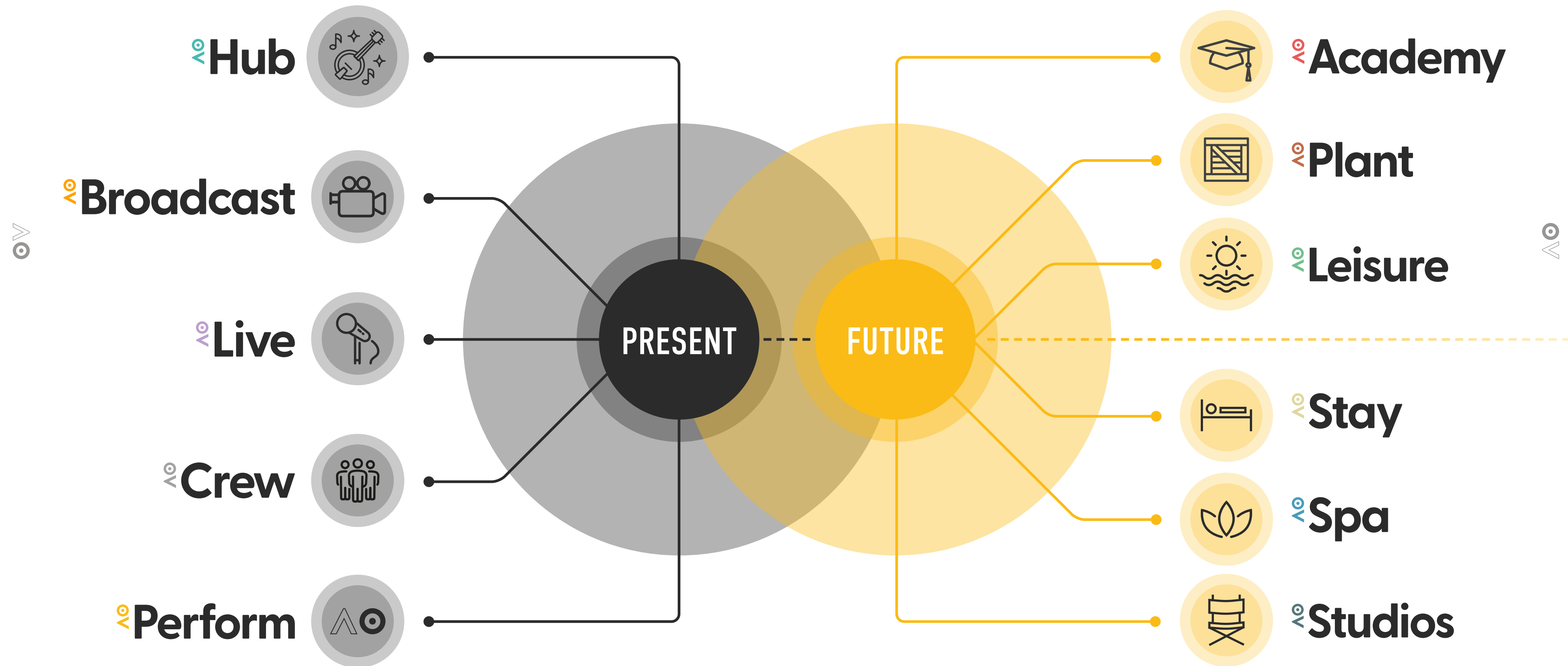


OUTDOOR AND LEISURE



ROAD AHEAD

Park is specifically designed to establish a robust value chain and foster innovation, collaboration, and creativity.



HEADLINE FIGURES

o Park

PHASE ONE

£45 MILLION
investment realises...

240,000 ft²
of lettable space.

PHASE TWO

£56 MILLION
additional investment
realises...

512,000 ft²
of total lettable space
by **Phase Two**.

PROJECTED INCOME

Potential for...

£4m

...annual income.

Leases of...

£4.5m

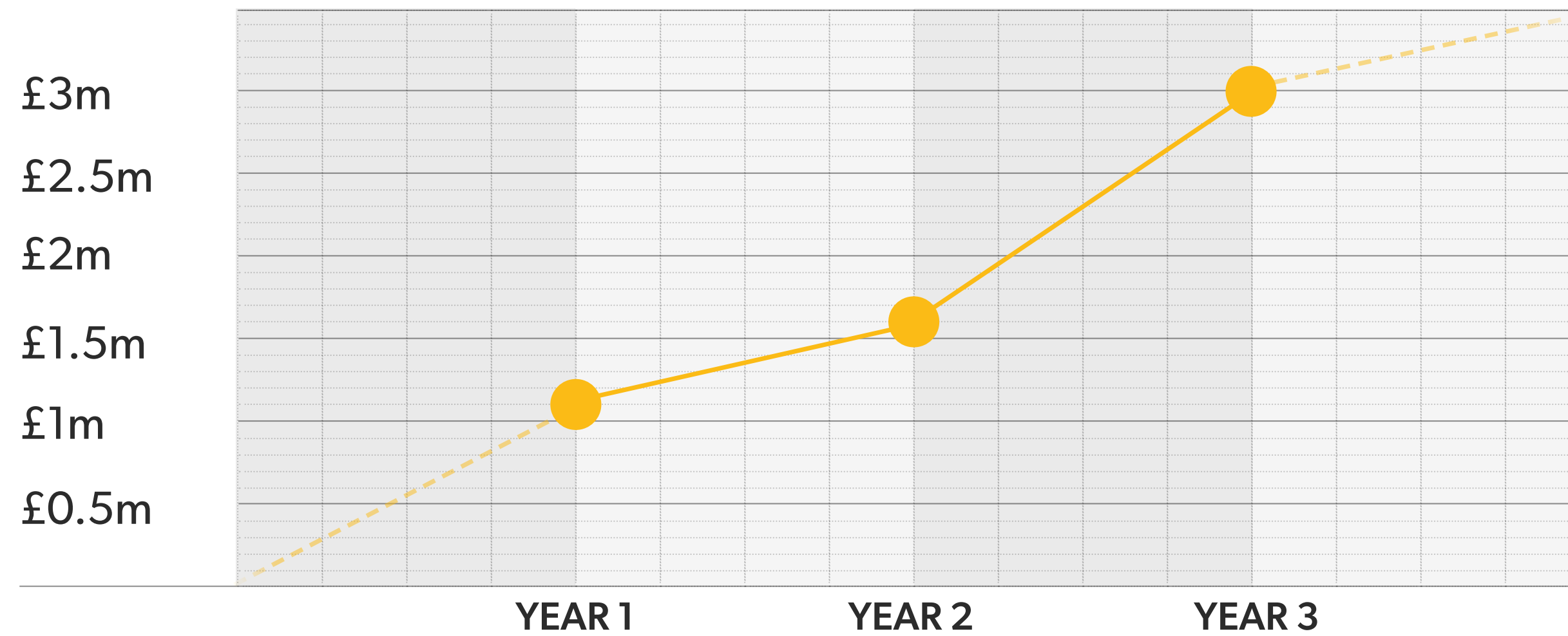
by year three.

Leading to...

£3m

operating profit.

Annual Growth:



↓ ECONOMIC AND COMMUNITY IMPACT

o Park

o Park will deliver...



178 JOBS
created in high
growth sectors

300+
freelancer
opportunities

300,000ft²
of Employment
Infrastructure



25%
Salary uplift across
adjacent sectors

£120M
inward
investment

GVA ↑
contribute to a
significant GVA uplift

Padstow

o Park

MAKING IT HAPPEN WITH

Park Strategic Management



NUB SOUND



AIRFIELD STUDIOS



KB EVENT



CYNICAL
MANAGEMENT



ROTHBRIDGE
INVESTMENTS

Park Project Team



HYDROCK



ALDER KING



CORNWALL
ENVIRONMENTAL
CONSULTANTS



LHC DESIGN



GARDINER AND
THEOBALD

Cindy Dalglish | Managing Director | 44 (0) 75436 40890 | cindy@asoneperform.com

INVESTMENT OPPORTUNITIES TO 2030

